



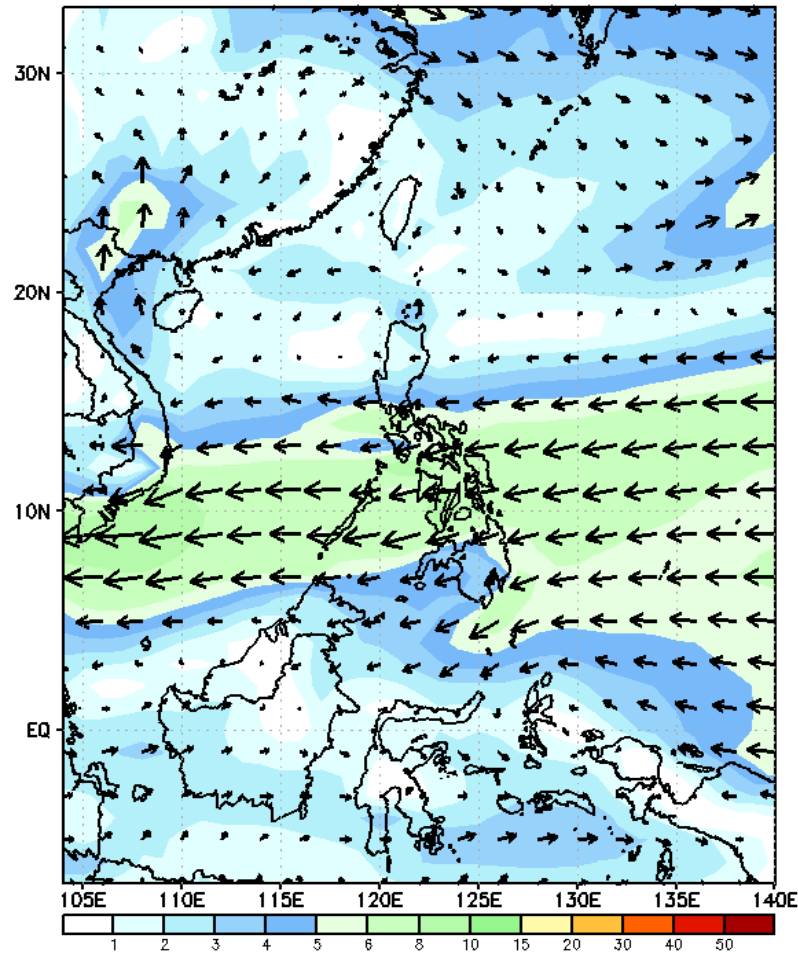
Week 1 & Week 2 Forecast for the Philippines using GEFS Model



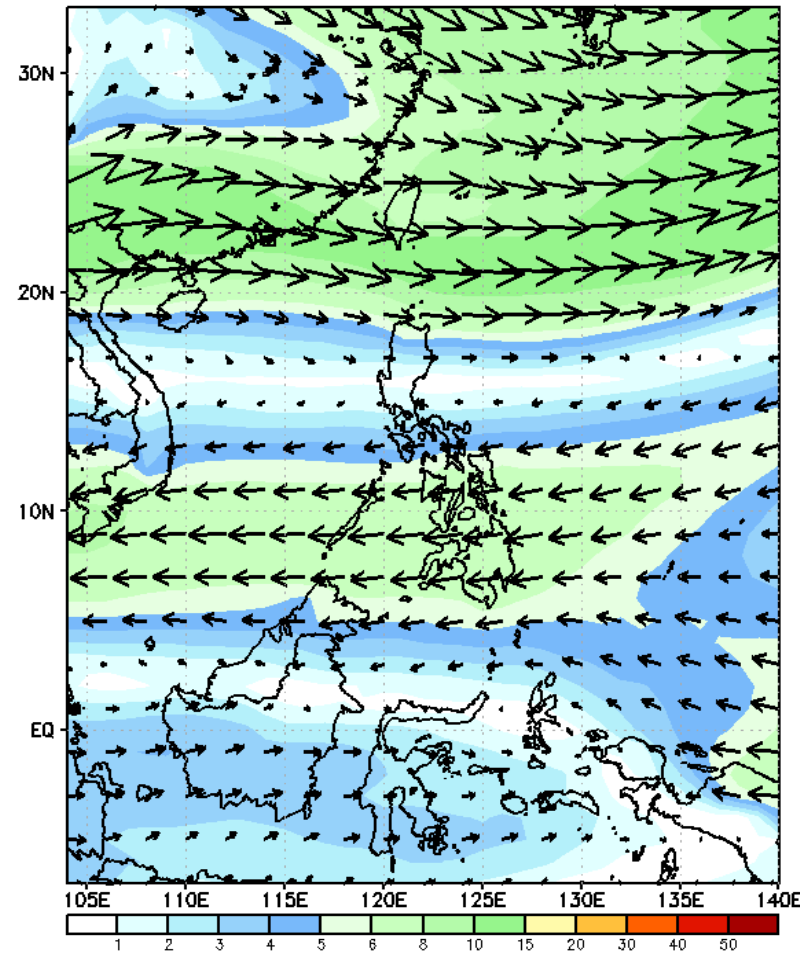
GEFS Week-1 Wind Forecasts:

Week 1: Apr 02 - Apr 08, 2025

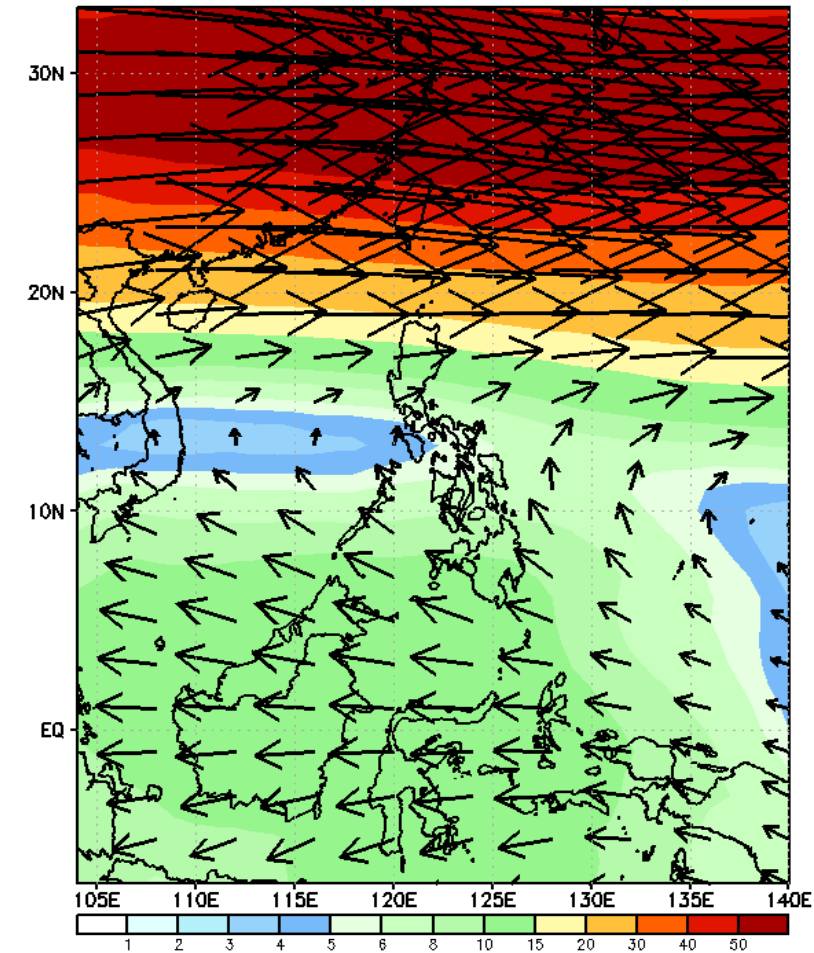
GEFS Week-1 850-hPa Wind Total
Valid: 20250402 - 20250408



GEFS Week-1 700-hPa Wind Total
Valid: 20250402 - 20250408

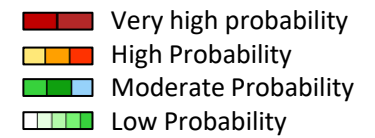


GEFS Week-1 200-hPa Wind Total
Valid: 20250402 - 20250408



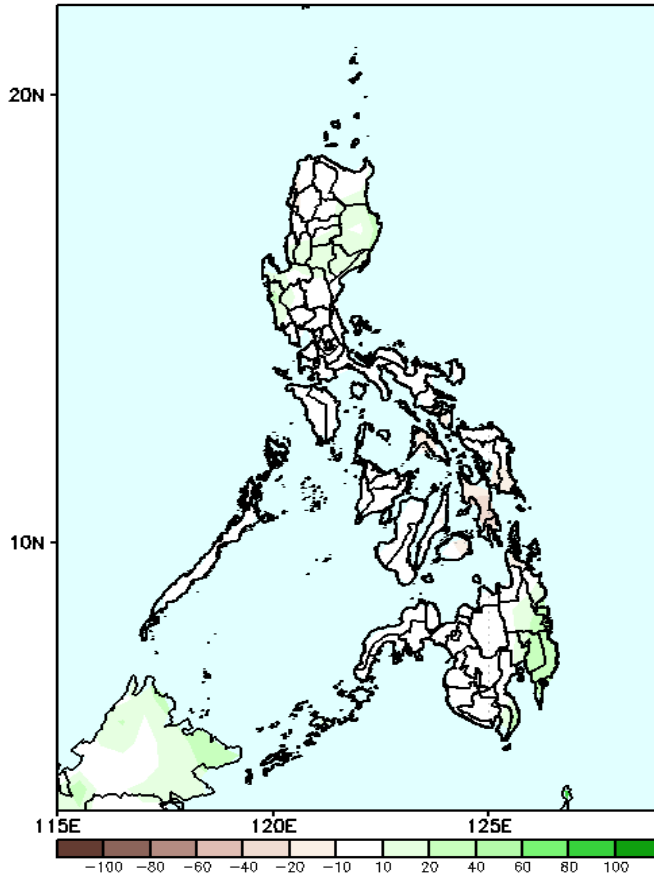
Easterlies affecting most parts of the country during the forecast period

Precipitation Anomaly and Exceedance Probability > 25/50 mm



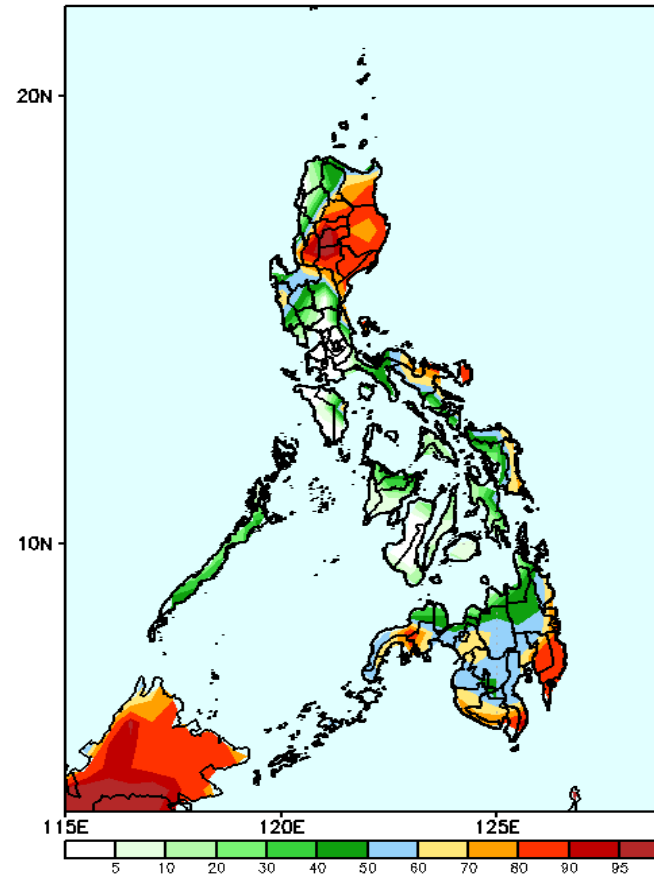
Week 1: Apr 02 - Apr 08, 2025

GEFS Week-1 Precip Anomaly
Valid: 20250402 - 20250408



Increase of rainfall of 10-40mm is expected in some areas in Northern and Central Luzon and Eastern Mindanao.

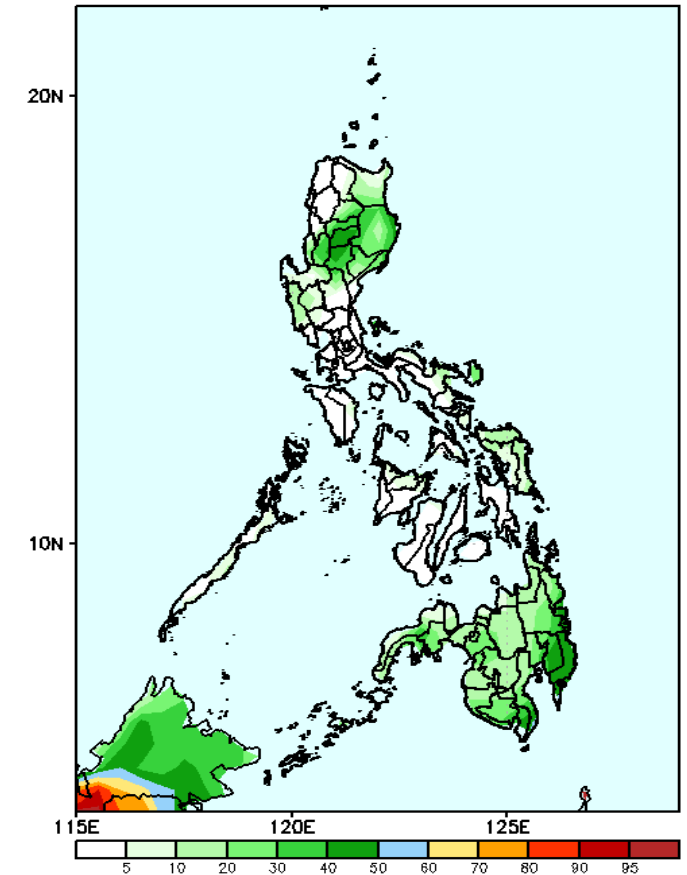
GEFS Week-1 Exceedance Prob. > 25mm
Valid: 20250402 - 20250408



Probability to Exceed 25mm

- Moderate to high over the western section of CAR, most of Cagayan Valley, La Union, Pangasinan, Zambales, Samar Provinces and most of Mindanao;
- Low to moderate over the rest of Luzon and Visayas.

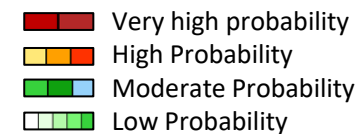
GEFS Week-1 Exceedance Prob. > 50mm
Valid: 20250402 - 20250408



Probability to Exceed 50mm

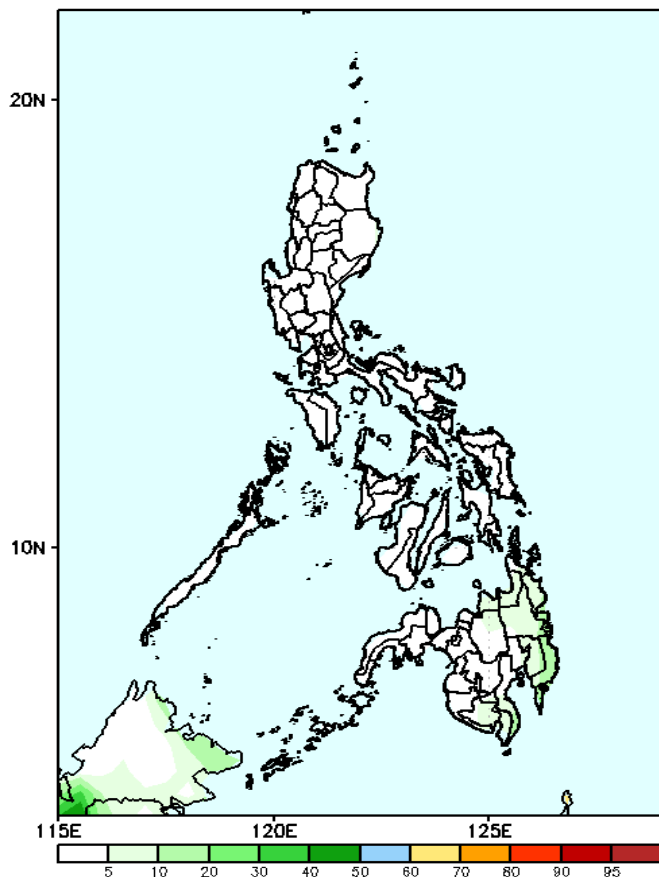
- Low to moderate over Northern Luzon and most parts of Mindanao;
- Low over the rest of the country.

Exceedance Probability > 100/150/200 mm



Week 1: Apr 02 - Apr 08, 2025

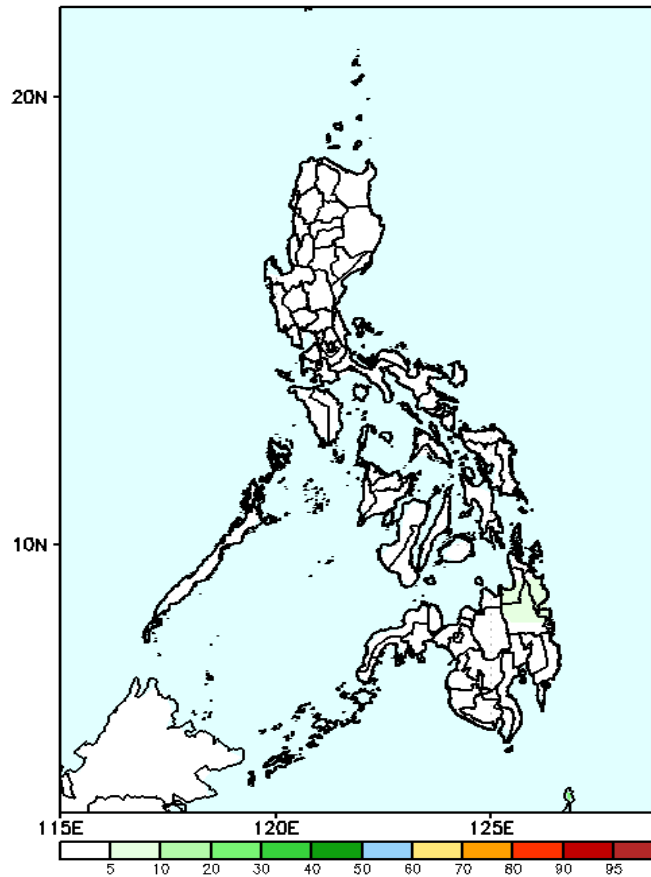
GEFS Week-1 Exceedance Prob. > 100mm
Valid: 20250402 - 20250408



Probability to Exceed 100mm

- Low across the country.

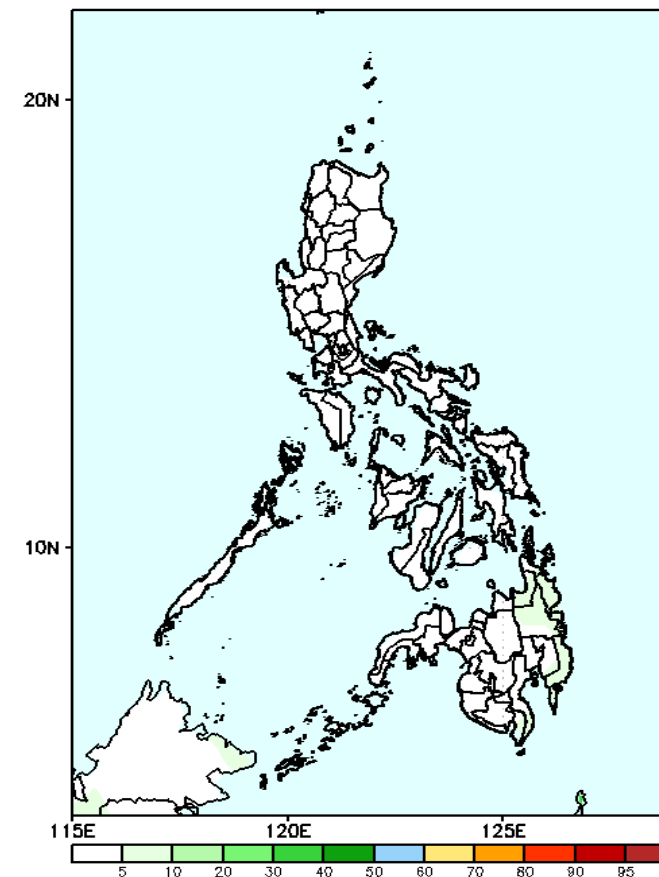
GEFS Week-1 Exceedance Prob. > 200mm
Valid: 20250402 - 20250408



Probability to Exceed 150mm

- Low across the country.

GEFS Week-1 Exceedance Prob. > 150mm
Valid: 20250402 - 20250408



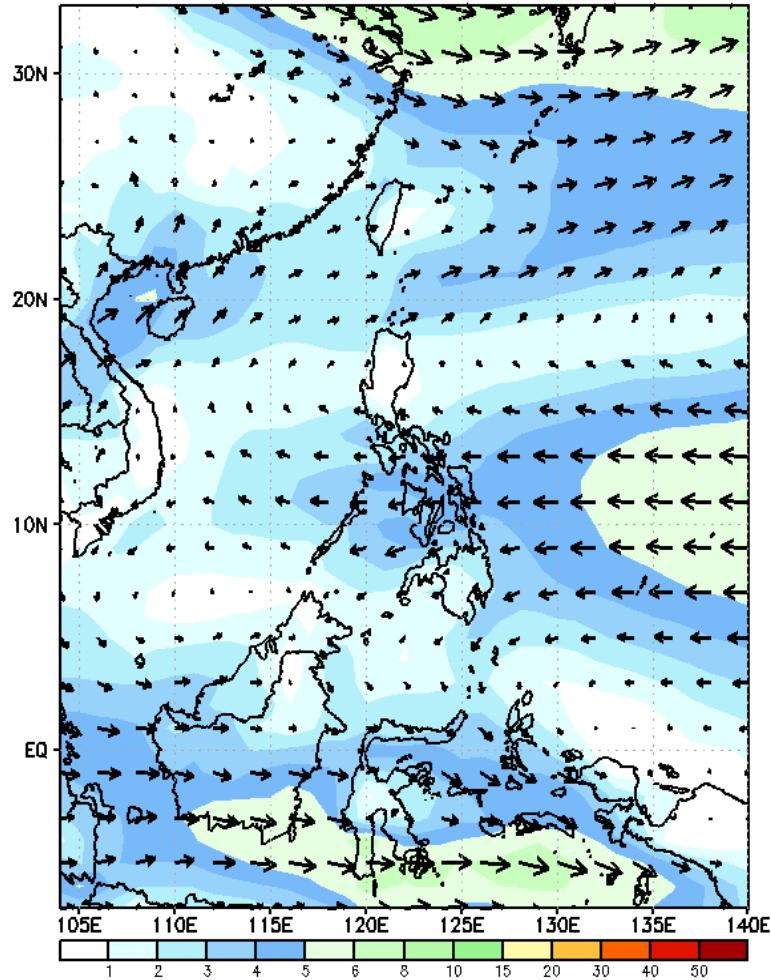
Probability to Exceed 200mm

- Low across the country.

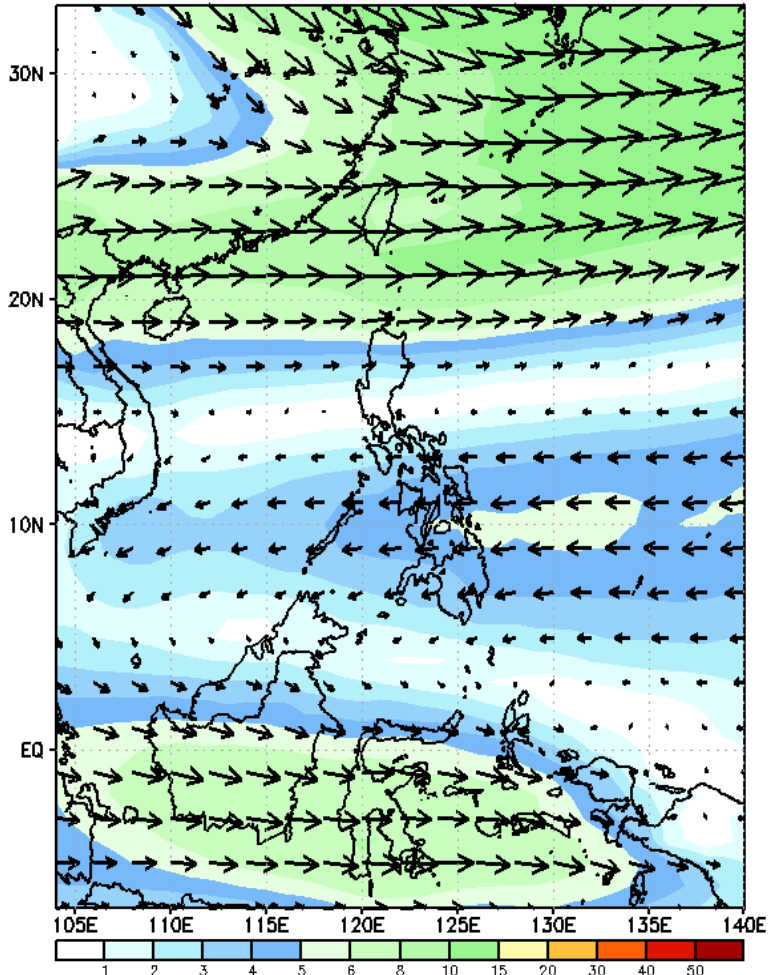
GEFS Week-2 Wind Forecasts:

Week 2: Apr 07-13, 2025

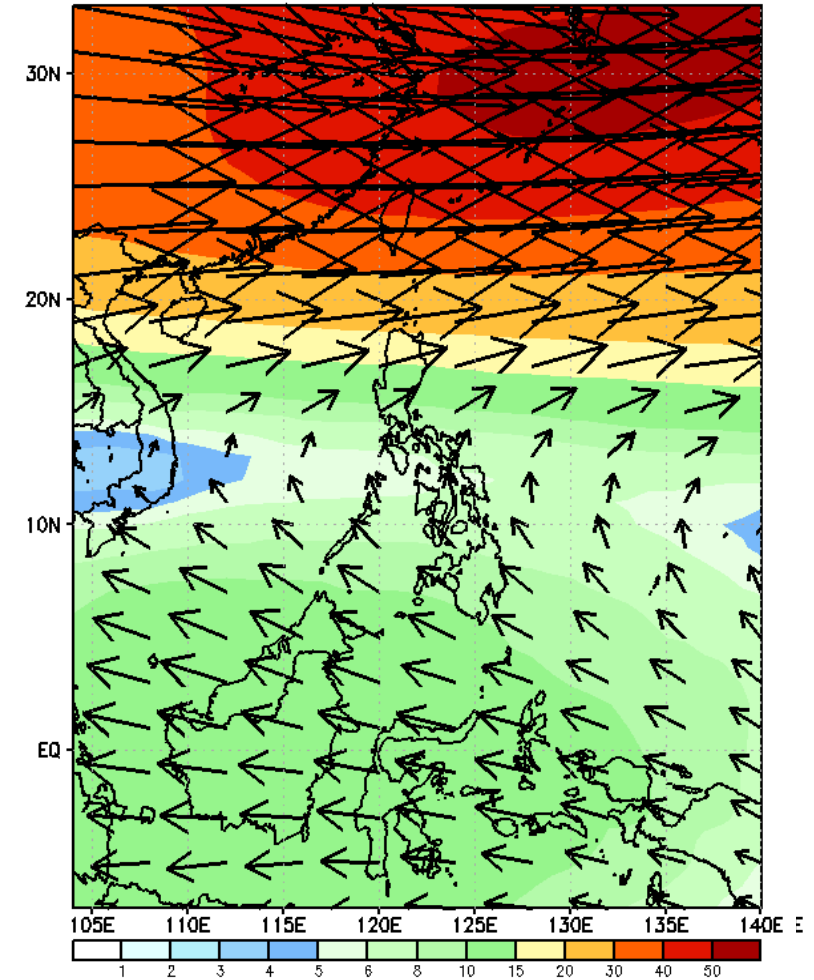
GEFS Week-2 850-hPa Wind Total
Valid: 20250409 - 20250415



GEFS Week-2 700-hPa Wind Total
Valid: 20250409 - 20250415

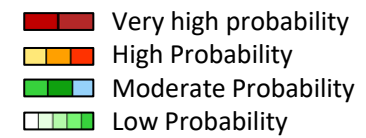


GEFS Week-2 200-hPa Wind Total
Valid: 20250409 - 20250415



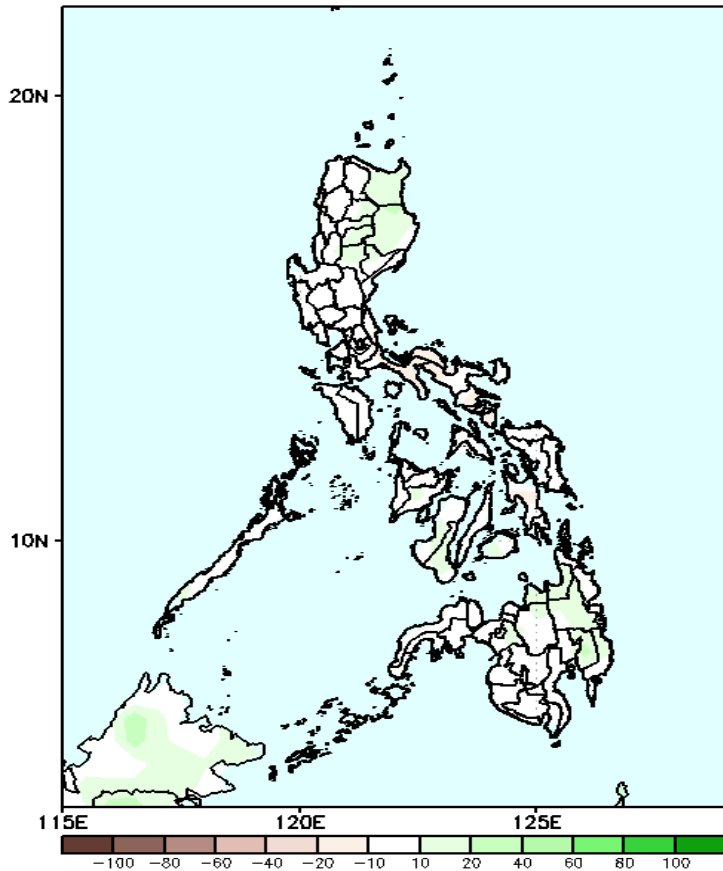
Easterlies affecting most parts of the country during the forecast period

Precipitation Anomaly and Exceedance Probability > 25/50 mm



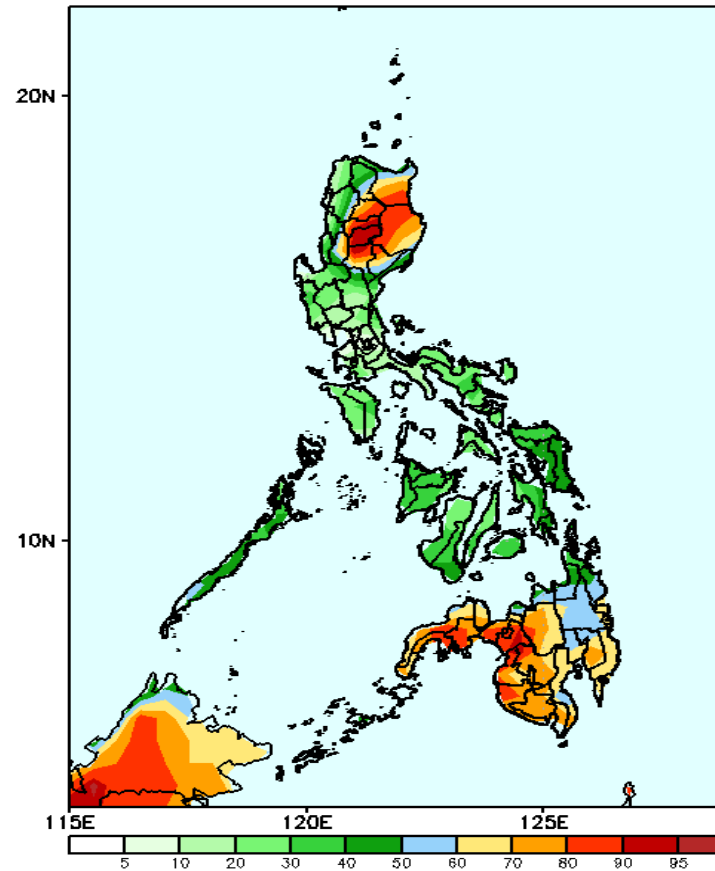
Week 2: Apr 07-13, 2025

GEFS Week-2 Precip Anomaly
Valid: 20250409 - 20250415



Increase of rainfall of 10-20mm is expected in most parts of the country.

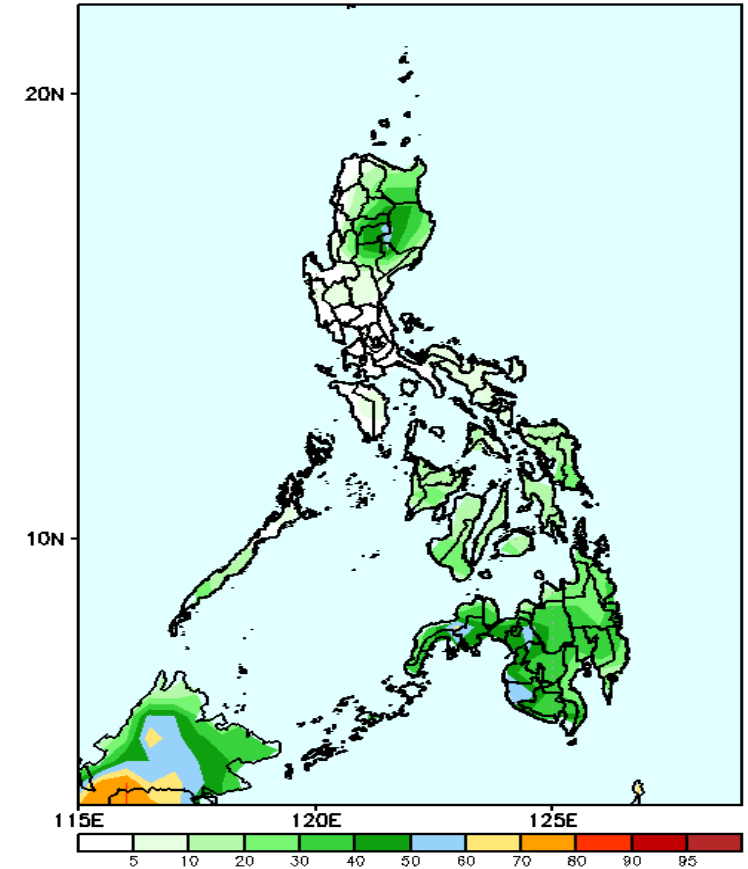
GEFS Week-2 Exceedance Prob. > 25mm
Valid: 20250409 - 20250415



Probability to Exceed 25mm

- Moderate to high over the western section of CAR, most of Cagayan Valley and most of Mindanao;
- Low to moderate over the rest of Luzon and Visayas.

GEFS Week-2 Exceedance Prob. > 50mm
Valid: 20250409 - 20250415



Probability to Exceed 50mm

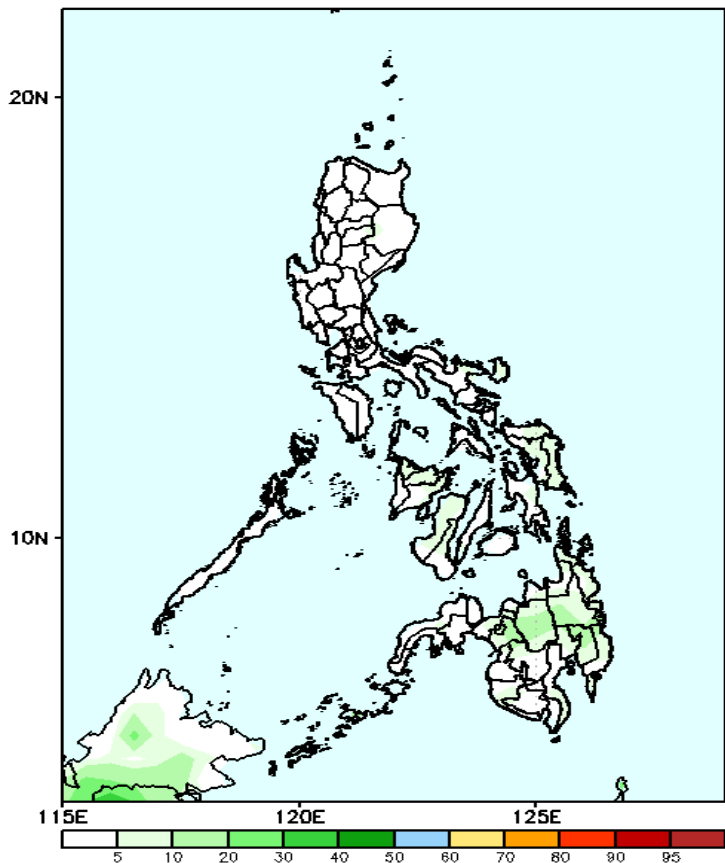
- Low to moderate over portions of CAR and Cagayan Valley and most parts of Mindanao;
- Low over the rest of the country.

Exceedance Probability > 100/150/200 mm

- Very high probability
- High Probability
- Moderate Probability
- Low Probability

Week 2: Apr 07-13, 2025

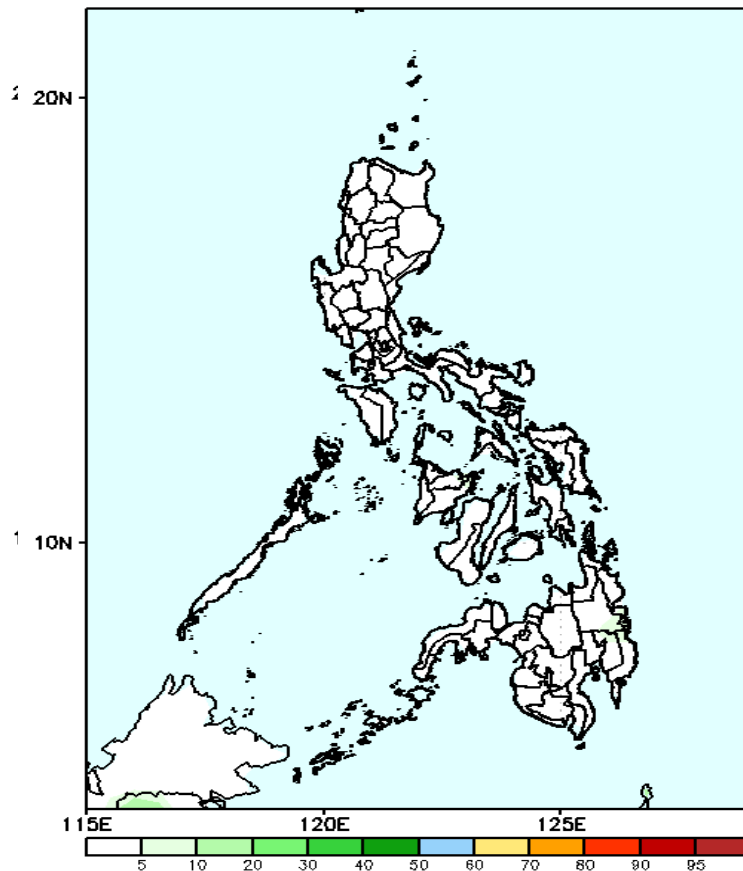
GEFS Week-2 Exceedance Prob. > 100mm
Valid: 20250409 - 20250415



Probability to Exceed 100mm

•Low across the country.

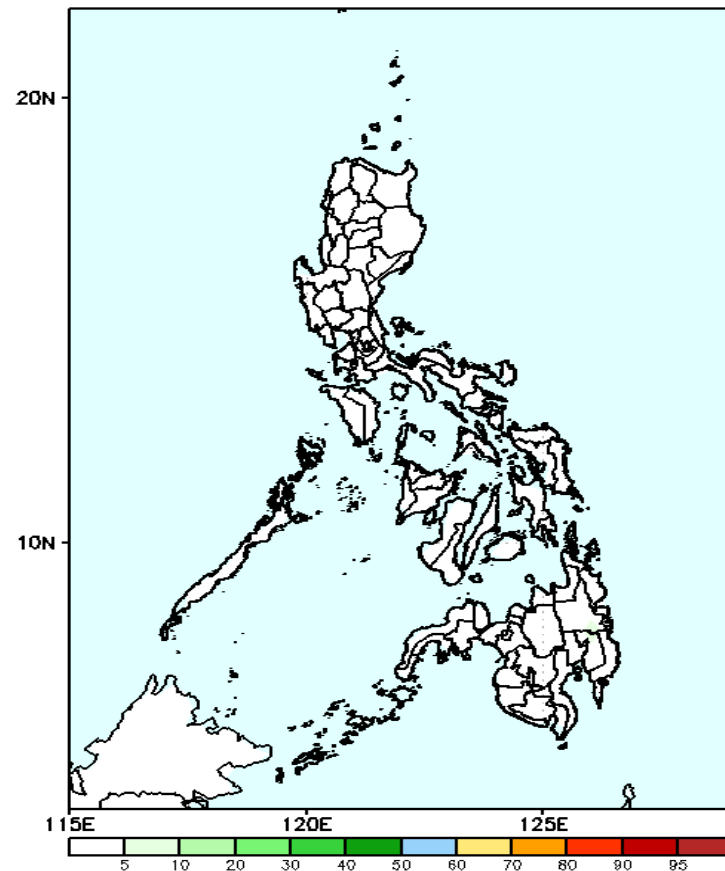
GEFS Week-2 Exceedance Prob. > 150mm
Valid: 20250409 - 20250415



Probability to Exceed 150mm

•Low across the country.

GEFS Week-2 Exceedance Prob. > 200mm
Valid: 20250409 - 20250415

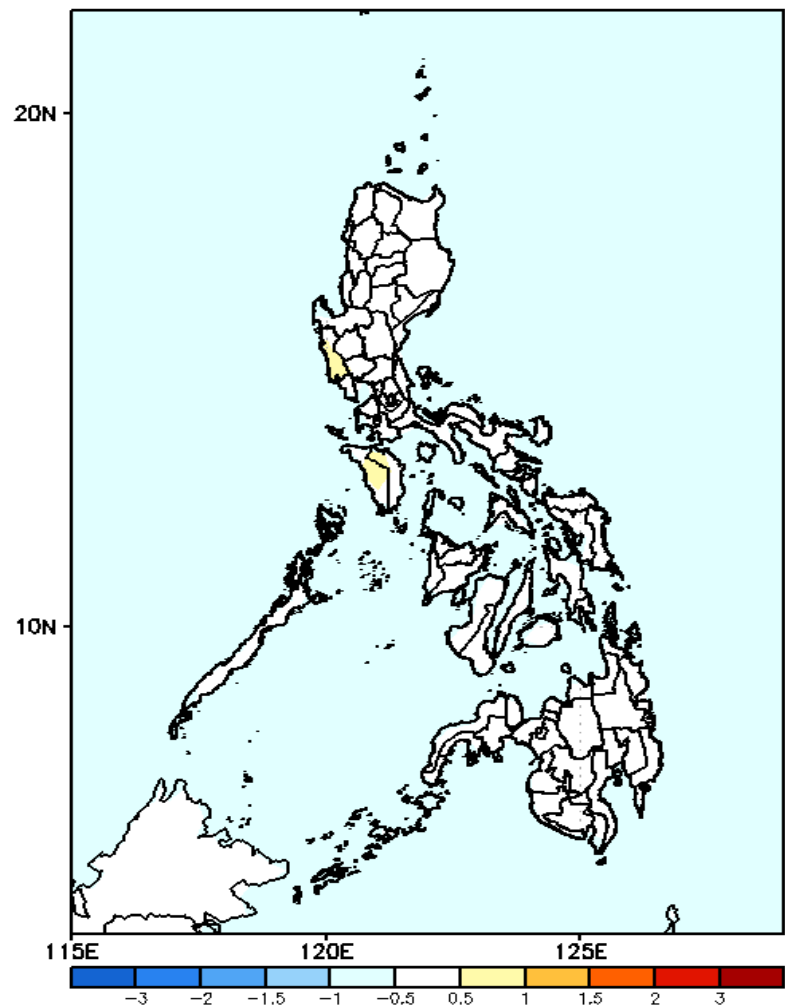


Probability to Exceed 200mm

•Low across the country.

GEFS Week-1 & 2 Forecasts: T2m Anomaly

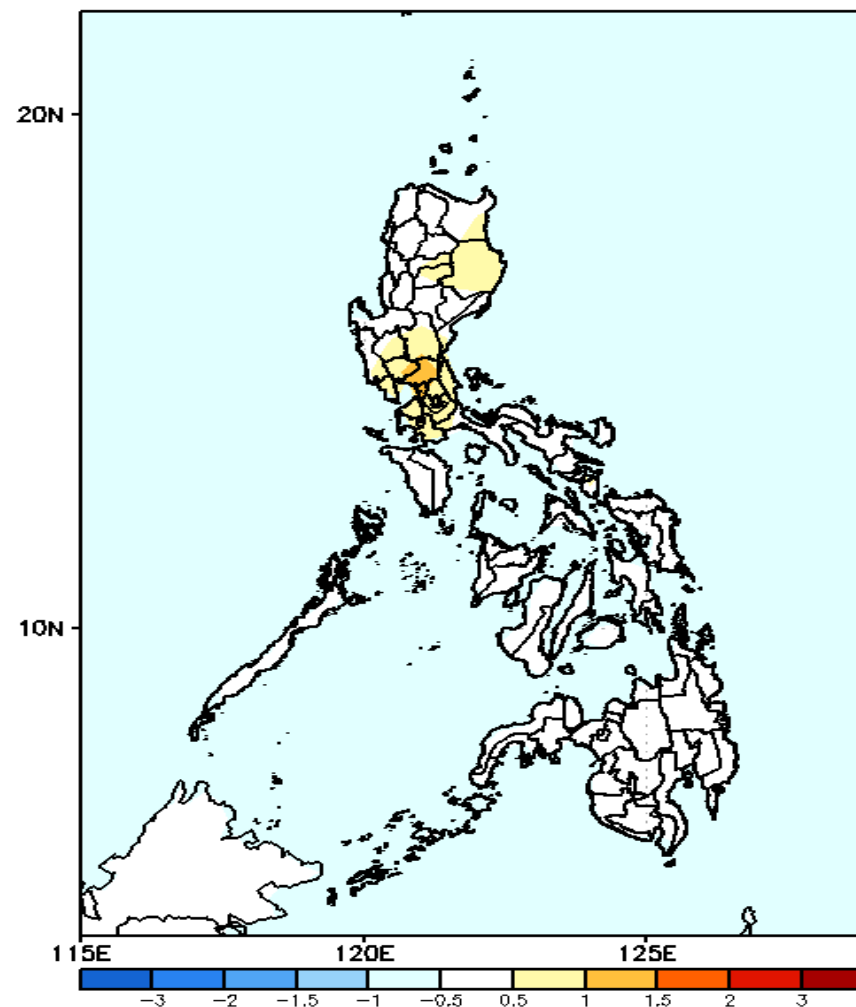
GEFS Week-1 T2m Anomaly
Valid: 20250402 - 20250408



2m Temperature Week 1: Apr 02 - Apr 08, 2025

Near average surface air temperature will likely be experienced in most parts of the country.

GEFS Week-2 T2m Anomaly
Valid: 20250409 - 20250415



2m Temperature Week 2: Apr 09-13, 2025

Near average surface air temperature will likely be experienced in Luzon, while most parts of the country except for parts of Northern Luzon, most of Central Luzon and CALABARZON where slightly warmer than average surface air temperature is likely.